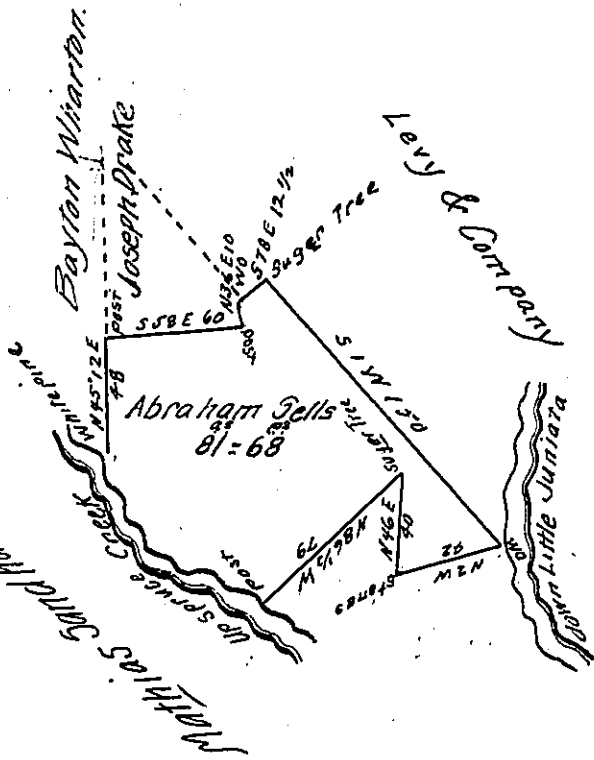


Courses and distances
up Spruce Creek from
the Post to the White Pine

N 23 W - 38
N 12 W - 53
N 64 E - 17 White Pine
108



Situate on both sides of the road leading from Dorseys Forge to
Spruce Creek in Franklin Township Huntingdon County containing Eighty one
Acres & Sixty eight Perches and the Usual Allowance for Roads Surveyed the
thirteenth day of October 1798 In pursuance of a Warrant to Abraham Sells
dated the seventh day of June 1792.

John Caman D.S.

Daniel Brodhead Esquire S.G.

IN TESTIMONY that the above is a copy of the original remaining on file in
the Department of Internal Affairs of Pennsylvania, made
comformably to an Act of Assembly approved the 16th day of
February 1833, I have hereunto set my hand and caused
the Seal of said Department to be affixed at Harrisburg,
this Twenty-Second day of January 1907

Loach J. Brewer
Secretary of Internal Affairs.